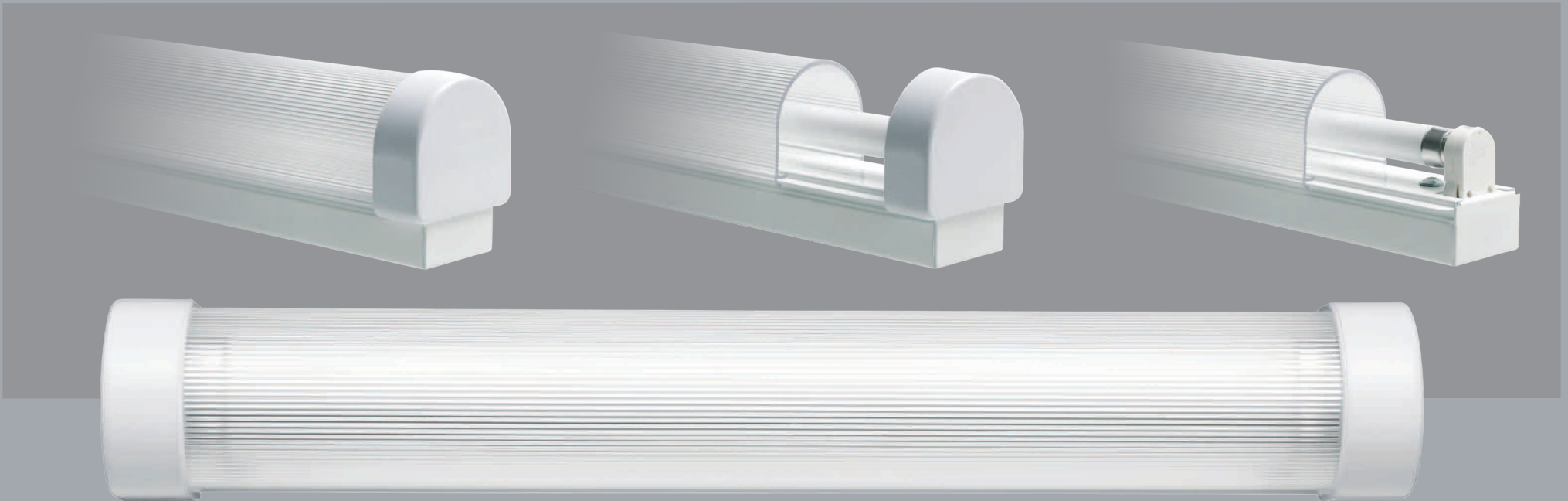


T5 Slim Diffuser Batten

Display lighting

- The T5 Slim Diffuser Batten is available either switched or dimmable with DSI, DALI or 1-10v protocols and can be supplied with Emergency conversions incorporated within the 28w and 35w only. Wiring from behind.



Incorrect wiring/programming will invalidate all warranties.

Emergency conversions available for 28w and 35w only switched. DSI or DALI not 1-10v.

T5 Slim Diffuser Batten Display Lighting



TECHNICAL INFORMATION

LAMP

T5 triphosphor colour 840 as standard, other colour temperatures to order. Typical lamp life T5 20,000 hrs, longer life lamps available as cost option.

FIXING

2 screws through the fitting, (not included).

COLOURS

Coloured sleeves are not suitable for HO (high output) lamps. Any lamp colour or our DDP coloured sleeves (guaranteed fade free) can be specified. Ice blue, sky blue, royal blue, purple, lavender, candy pink, pink, light red, red, orange, light orange, chrome green, leaf green, acid yellow and candlelight. Other filter colours available but not guaranteed fade free.

CONSTRUCTION

Powder coated white steel box section, HF electronic ballast.

WIRING AND CONNECTIONS

All internal wiring 1mm and 1.5mm solid. External wiring if supplied 1.5mm three core PVC.

OPERATION TEMPERATURE

-20°C – +50°C Please note lamps will run at reduced light output in colder temperatures.

STANDARDS

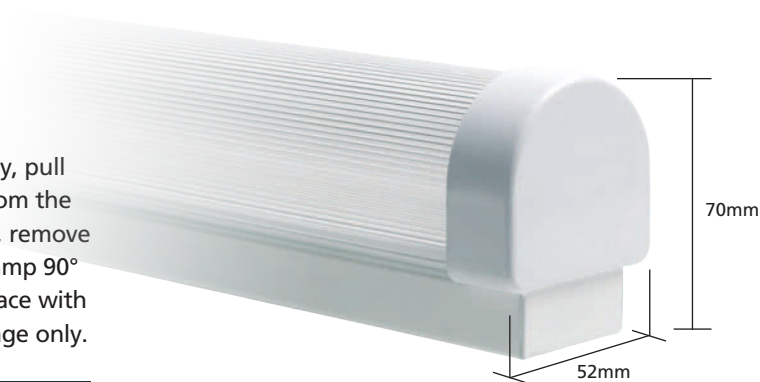
Complies with CE for Europe. Class 1 product, Covers EMC/LV requirements, CE WEEE and ROHS compliant Ballast EN61347, EN 55015, EN60929 EN61547 EN 61000-3-2. Designed for use in ambient temperatures of 25°C IP20.

VOLTAGE

220v-240v AC 50-60Hz, Start up amps 0.98 operating amps 0.07- 0.30 dependant on wattage.

RE-LAMPING

Disconnect power supply, pull white end caps away from the ends of the light fitting, remove the diffuser and twist lamp 90° then lift lamp out. Replace with lamp of the same wattage only.



| T5 Slim Diffuser Batten | | |
|-------------------------|----------------|--------|
| Product Code | Overall Length | Lumens |
| T5 SDB 8w | 320mm | 480 |
| T5 SDB 14w | 583mm | 1350 |
| T5 SDB 21w | 883mm | 2100 |
| T5 SDB 28w | 1183mm | 2900 |
| T5 SDB 35w | 1483mm | 3650 |

| T5 Slim Diffuser Batten HO Version | | |
|------------------------------------|----------------|--------|
| Product Code | Overall Length | Lumens |
| T5 SDB 24w | 583mm | 2000 |
| T5 SDB 39w | 883mm | 3500 |
| T5 SDB 54w | 1183mm | 5000 |
| T5 SDB 80w | 1483mm | 6500 |

For dimmable option, add protocol version 1-10v, DSI or DALI to product code. Add EC for Emergency Conversion.



Incorrect wiring or programming will invalidate all warranties.

For Product support Freecall 1800 733 113 or Email info@yld.com.au